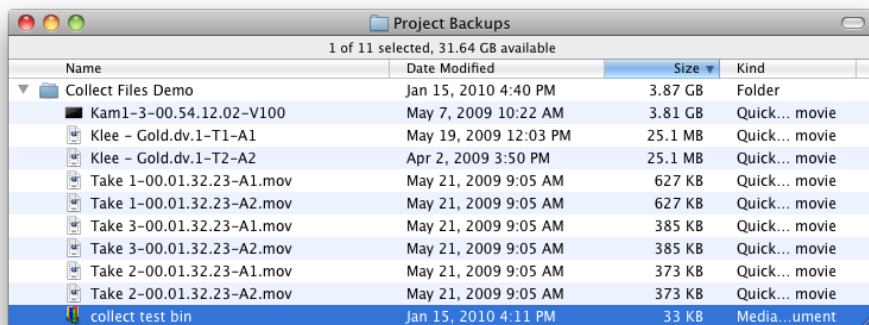


Restoring Programs and Bins previously backed up with "Collect Files"

Bringing back Programs and Bins that have been backed up using "Collect Files" is quick and easy.

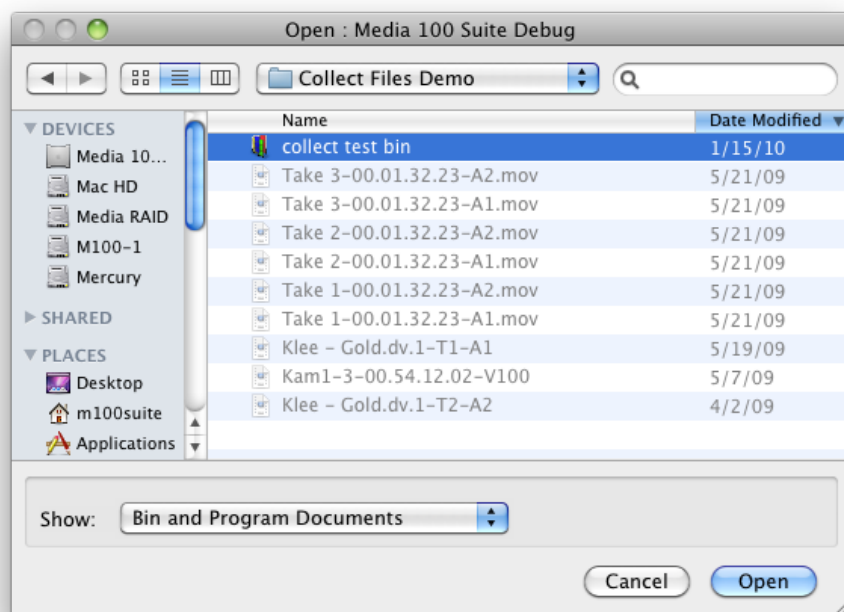
Locate the backed up Program or Bin and it's associated media files in the folder created when the "Collect Files" feature was first used. In this example, we'll use a Bin.



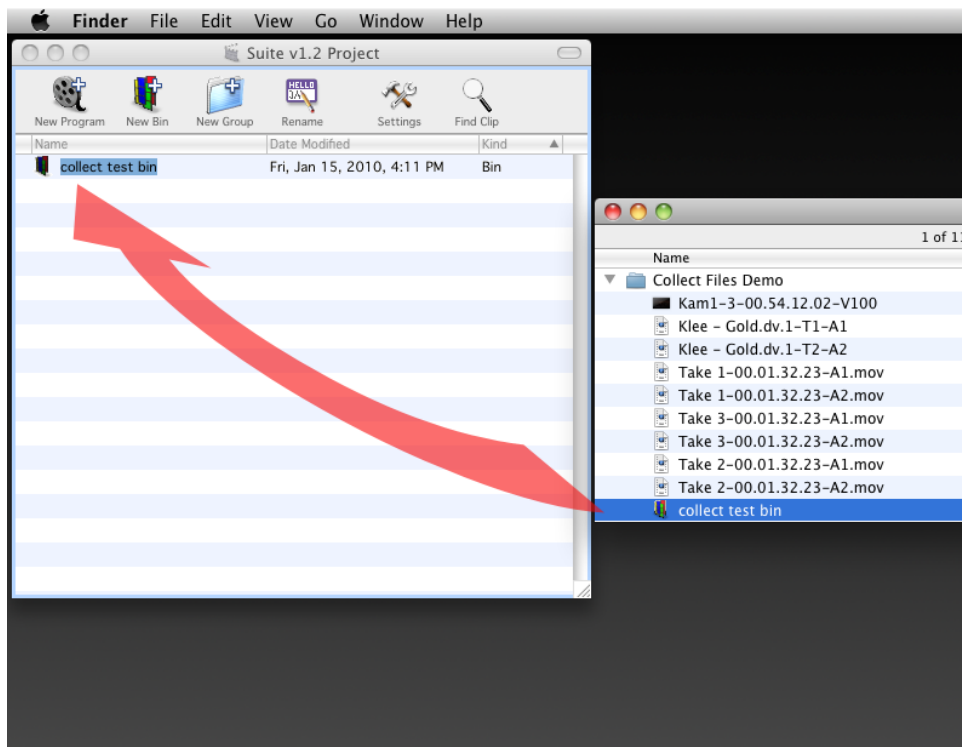
Next, create a new Project or open a Project you'd like to bring the Bin into.

You can bring the Bin into the Project in one of two ways...

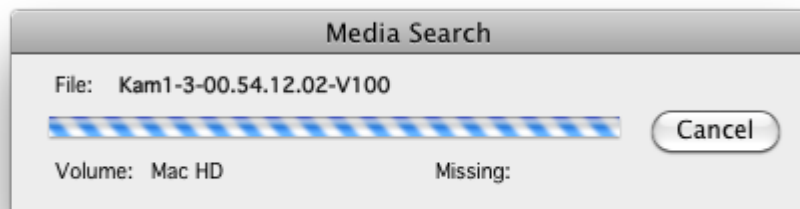
From the "File" menu, you can choose "Open" and then navigate to where the file is...



...or, you can simply drag and drop the file into the Project window.



If the the "Auto-Relink Media" preference is enabled (it is by default) then Media 100 Suite will perform a Media Search and automatically link the media to the clips in the Bin.



When the Media Search is complete, the Bin will open with all clips inside ready for use in your Project.

